

MIRAGE

Truck and Bus Radial Tires Catalogue
2016-2017

MIRAGE



 SHANDONG HENGFENG RUBBER & PLASTIC CO., LTD.



COMPANY PROFILE

AGATE, enjoying high popularity in both domestic and international market, is one of the major brands developed by Shandong Hengfeng Rubber & Plastic Co., Ltd. (referred as HENGFENG).

With total assets of over 5 billion CNY and more than 6000 employees, HENGFENG is one of the leading tyre manufacturers in China since 1995. The production base is consisted of four plants, covering an area of approximately 1.6 square kilometers.

HENGFENG specializes in the designing, improving and manufacturing of radial tire widely used in passenger car (PCR), SUV, 4X4, truck and bus (TBR) in all seasons and road conditions. Its annual capacity for TBR is now over 4 million pieces/sets, for PCR which is now over 14 million pieces. The capacity is growing continuously as the production base is still expanding.

HENGFENG takes pride in its strong R&D team and advance testing facilities, which assure the excellent and stable quality of its product. Many of HENGFENG's equipment are imported from Europe, United States and Japan.

HENGFENG also built a comprehensive quality assurance system. The company was certified by the US Department of Transportation (DOT), the Economic Center of Europe (ECE), ISO/TS16949 and the INMETRO of Brazil. And its products have been certified by CCC, GCC, BIS, SNI, SONCAP and many other quality standards required by different countries.



We export to more than 80 countries in the world

QUALIFICATIONS



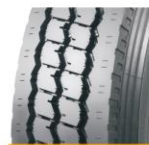
DIRECTORY

ALL POSITION



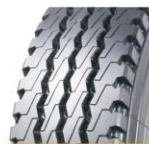
12R22.5-18

MG117 P1



12.00R24-20
315/80R22.5-20

MG122 P1



10.00R20-18
11.00R20-18
12.00R20-18

MG307 P2



6.50R16-12
7.00R16-14
7.50R16-14
8.25R16-16
8.25R20-16
9.00R20-16
10.00R20-18
11.00R20-18
12.00R20-18
12.00R24-20
11R22.5-16
12R22.5-18
13R22.5-20

MG702 P2



9.00R20-16
10.00R20-18
11.00R20-18
12.00R20-18

MG708 P3



315/80R22.5-20

ST011 P3



11R22.5-14
11R22.5-16
12R22.5-18
295/80R22.5-18

FAR515 P4



11R22.5-16
12R22.5-18
295/80R22.5-18
315/80R22.5-20
12.00R24-20

FAM517 P4

2016-2017 | **MIRAGE**

DIRECTORY | **MIRAGE**

MIRAGE | DIRECTORY

STEER AND TRAILER



11R22.5-16
11R24.5-14
11R24.5-16
215/75R17.5-16
225/70R19.5-14
235/75R17.5-16
245/70R19.5-16
255/70R22.5-16
285/75R24.5-14
285/75R24.5-16
295/75R22.5-14
295/75R22.5-16

MG111 P5



8.25R16-16
9.5R17.5-16
295/80R22.5-18
315/70R22.5-20
315/80R22.5-20

MG121 P5



12.00R24-20

MG607 P8



11R22.5-16
12R22.5-18
13R22.5-20
215/75R17.5-16
255/70R22.5-16
295/80R22.5-18
315/70R22.5-20
315/80R22.5-20

MG660 P8



11.00R20-18

MG123 P6



315/80R22.5-20

MG124 P6



295/80R22.5-18

MG668 P9



225/75R17.5-14
245/70R17.5-16
245/70R17.5-18
245/70R19.5-16
245/70R19.5-18
265/70R19.5-16
265/70R19.5-18
285/70R19.5-16
285/70R19.5-18

FAR518 P9



11R22.5-16
12R22.5-18

MG330 P7



9.00R20-16
10.00R20-18
11.00R20-18
12.00R20-18
11R22.5-16
315/80R22.5-20

MG606/606+ P7

2016-2017 | **MIRAGE**

DRIVE



7.00R16-14
7.50R16-14
8.25R16-16
8.25R20-16
9.00R20-16
10.00R20-18
11.00R20-18
12.00R20-18



11R22.5-16
11R24.5-14
11R24.5-16
285/75R24.5-14
285/75R24.5-16
295/75R22.5-14
295/75R22.5-16



10.00R20-18
11R22.5-16
12R22.5-18
315/70R22.5-20
315/80R22.5-20



10.00R20-18
295/80R22.5-18



7.50R16-14
8.25R16-16
8.25R20-16
9.00R20-16
10.00R20-18
11.00R20-18
12.00R20-18



12.00R24-20
315/80R22.5-20



10.00R20-18
11.00R20-18
12.00R20-18
12R22.5-18



7.00R16-14
7.50R16-14
8.25R16-16
8.25R20-16
9.00R20-16
10.00R20-18
11.00R20-18
12.00R20-18



10.00R20-18



11R22.5-16
12R22.5-18
13R22.5-20
215/75R17.5-16
235/75R17.5-16
315/70R22.5-20
295/80R22.5-18
315/80R22.5-20



10.00R20-18
11.00R20-18
12.00R20-18
12.00R24-20



10.00R20-18
11.00R20-18
12.00R20-18
12R22.5-18
13R22.5-20
315/80R22.5-20

2016-2017 **MIRAGE**

TRAILER



385/55R22.5-20
385/65R22.5-20
425/65R22.5-20
445/65R22.5-20



385/65R22.5-20



7.00R16-14
7.50R16-14
8.25R16-16
8.25R20-16
9.00R20-16
10.00R20-18



8.25R20-16
10.00R20-18
11.00R20-18
12.00R20-18
295/80R22.5-18



11R22.5-16
12R22.5-18
295/75R22.5-14
295/75R22.5-16



235/75R17.5-16
385/65R22.5-20



295/80R22.5-18



11.00R20-18
12.00R20-18



10.00R20-18
11.00R20-18
12.00R20-18

2016-2017 **MIRAGE**

OFF THE ROAD

ALL POSITION



MG117

Features

- ▶ Three zigzag grooves design with lugs. Provide excellent wet performance
- ▶ Special tread compound. Provide outstanding resistance to abrasion
- ▶ Shoulder design with lugs and sipes. Provide outstanding heat dissipation

Suitable for:

- ▶ All wheel position of truck.
- ▶ Atonal highways and regional roads as well as on/off road condition.

TYRE SIZE	PLY RATING	LOAD INDEX	SPEED SYMBOL	M+S	RIM	OVERALL DIAMETER (mm)	SECTION WIDTH (mm)	TREAD DEPTH (mm)	TUBE	MAX PRESSURE (kPa)	MAX LOAD (kg)
12R22.5	18	152/149	L	-	9.00	1045	306	14	TL	930/930	3550/3250



MG307

Features

- ▶ Wide tread width and longitudinal rib pattern with large contact-area designed for drive control and long mileage.
- ▶ Special groove design prevents stone trapping and penetration resulting in groove cracks.

Suitable for:

- ▶ All wheel position of cargo truck, steer and trailer position of dump truck and concrete mixer.
- ▶ Regional roads and on/off road surfaces.

TYRE SIZE	PLY RATING	LOAD INDEX	SPEED SYMBOL	M+S	RIM	OVERALL DIAMETER (mm)	SECTION WIDTH (mm)	TREAD DEPTH (mm)	TUBE	MAX PRESSURE (kPa)	MAX LOAD (kg)
10.00R20	18	149/146	K	-	7.50	304	276	17	TT	930/930	3550/3000
11.00R20	18	152/149	K	-	8.00	304	276	17	TT	930/930	3550/3000
12.00R20	18	154/149	J	-	8.50	312	281	18	TT	840/770	3790/3270



MG122

Features

- ▶ Versatile pattern provides good traction and stability for various road surfaces.
- ▶ Shoulder design minimizes heat build-up.

Suitable for:

- ▶ All wheel position of truck.
- ▶ National highways and regional roads as well as on/off road condition.

TYRE SIZE	PLY RATING	LOAD INDEX	SPEED SYMBOL	M+S	RIM	OVERALL DIAMETER (mm)	SECTION WIDTH (mm)	TREAD DEPTH (mm)	TUBE	MAX PRESSURE (kPa)	MAX LOAD (kg)
12.00R24	20	160/157	K	-	8.50	1226	315	15.5	TT	900/900	4500/4125
15.00R22.5	20	156/152/154/151	L/M	M+S	9.00	1076	312	16.5	TL	860/860	4000/3550



MG702

Features

- ▶ Versatile pattern provides good traction and stability for various road surfaces.
- ▶ Shoulder design minimizes heat build-up.

Suitable for:

- ▶ All wheel position of truck.
- ▶ National highways and regional roads as well as on/off road condition.

TYRE SIZE	PLY RATING	LOAD INDEX	SPEED SYMBOL	M+S	RIM	OVERALL DIAMETER (mm)	SECTION WIDTH (mm)	TREAD DEPTH (mm)	TUBE	MAX PRESSURE (kPa)	MAX LOAD (kg)
6.00R16	12	110/110	K	M+S	5.00	700	185	11	TT	770/770	3150/2600
7.00R16	14	118/114	M	-	5.00	775	205	14	TT	770/770	3120/1800
7.50R16	14	122/118	M	-	6.00	805	215	13	TT	740/740	3495/1330
8.25R16	16	128/124	M	-	6.50	855	235	13	TT	770/770	3300/1800
8.25R20	16	130/127	L	-	6.50	972	232	13.5	TT	900/900	2450/2300
8.00R20	16	144/142	K	-	7.00	1019	239	13.5	TT	900/900	2600/2450
10.00R20	18	149/146	K	-	7.50	1055	278	16.5	TT	930/930	3250/3000
11.00R20	18	152/149	K	-	8.00	1085	293	17	TT	930/930	3350/3150
12.00R20	18	154/149	K	-	8.50	1125	315	17.5	TT	840/770	3790/3270
12.00R24	20	160/157	K	-	8.50	1225	315	16	TT	930/930	4000/4125
13R22.5	18	148/145	M	M+S	8.25	1084	278	16	TL	830/830	3000/2725
12R22.5	18	152/149	M	M+S	9.00	1085	300	16	TL	930/930	3550/3250
13R22.5	20	156/152/154/151	L/M	M+S	8.75	1124	320	16	TL	860/860	4000/3550

2016-2017 MIRAGE



MG708

Features

- ▶ Anti-abrasion tread compound for better mileage and enhanced wear resistance.
- ▶ Shoulder design minimizes heat build-up.

Suitable for:

- ▶ All wheel position of cargo truck for medium and long distance.
- ▶ Regional roads.

TYRE SIZE	PLY RATING	LOAD INDEX	SPEED SYMBOL	M+S	RIM	OVERALL DIAMETER (mm)	SECTION WIDTH (mm)	TREAD DEPTH (mm)	TUBE	MAX PRESSURE (kPa)	MAX LOAD (kg)
8.00R20	16	144/142	K	-	7.00	1019	239	13.5	TT	900/900	2600/2450
10.00R20	18	149/146	K	-	7.50	1055	278	16.5	TT	930/930	3250/3000
11.00R20	18	152/149	K	-	8.00	1085	293	17.0	TT	930/930	3350/3150
12.00R20	18	154/149	K	-	8.50	1125	315	17.5	TT	840/770	3790/3270



FAR515

Features

- ▶ Special tread compound. Provide outstanding resistance to abrasion
- ▶ Three zigzag grooves. Provide good applicability for all position
- ▶ Special groove design. Deliver stone-ejecting property
- ▶ Optimized pattern design. Provide outstanding resistance to irregular abrasion

Suitable for:

- ▶ All wheel position of truck.
- ▶ Atonal highways and regional roads as well as on/off road condition.

TYRE SIZE	PLY RATING	LOAD INDEX	SPEED SYMBOL	M+S	RIM	OVERALL DIAMETER (mm)	SECTION WIDTH (mm)	TREAD DEPTH (mm)	TUBE	MAX PRESSURE (kPa)	MAX LOAD (kg)
12R22.5	14	144/142	M	M+S	8.25	1084	278	15.5	TL	720/720	2800/2450
12R22.5	16	148/145	L	M+S	8.25	1084	278	15.5	TL	830/830	3150/2900
12R22.5	18	152/149	L	M+S	9.00	1085	300	16.5	TL	930/930	3550/3250
295/80R22.5	18	152/149	M	M+S	9.00	1044	298	16.0	TL	900/900	3350/3250
315/80R22.5	20	156/152	K	M+S	9.00	1076	312	16.5	TL	860/860	4000/3550



ST011

Features

- ▶ Versatile pattern provides good traction and stability for various road surfaces.
- ▶ Shoulder design minimizes heat build-up.

Suitable for:

- ▶ Drive and Trailer position of cargo trucks.
- ▶ National highways and regional roads as well as on/off road condition.

TYRE SIZE	PLY RATING	LOAD INDEX	SPEED SYMBOL	M+S	RIM	OVERALL DIAMETER (mm)	SECTION WIDTH (mm)	TREAD DEPTH (mm)	TUBE	MAX PRESSURE (kPa)	MAX LOAD (kg)
315/80R22.5	20	156/152	L	M+S	9.00	1076	312	16.5	TL	860/860	4000/3550



FAM517

Features

- ▶ Three zigzag grooves. Provide excellent anti-side slipping performance and ensure excellent water evacuation
- ▶ Combination of rib and lug design. Deliver outstanding traction and handling
- ▶ Shoulder design with lugs. Provide excellent heat dissipation

Suitable for:

- ▶ All wheel position of truck.
- ▶ Atonal highways and regional roads as well as on/off road condition.

TYRE SIZE	PLY RATING	LOAD INDEX	SPEED SYMBOL	M+S	RIM	OVERALL DIAMETER (mm)	SECTION WIDTH (mm)	TREAD DEPTH (mm)	TUBE	MAX PRESSURE (kPa)	MAX LOAD (kg)
13R22.5	16	146/143	K	M+S	8.25	1084	278	15.5	TL	850/850	3150/2900
13R22.5	18	152/149	K	M+S	9.00	1085	300	16	TL	930/930	3550/3250
295/80R22.5	18	152/149	K	M+S	9.00	1044	298	16	TL	900/900	3350/3250
315/80R22.5	20	156/152	K	M+S	9.00	1076	312	17	TL	860/860	4000/3550
12.00R24	20	160/157	K	M+S	8.50	1225	315	17	TL	900/900	4000/4125

2016-2017 MIRAGE

STEER AND TRAILER



MG111

Features

- Solid rib design combined with multiple sipes.
- Four wide circumferential grooves.
- Solid shoulder design.

Suitable for:

- Provide excellent heat dissipation and improved regular wear with lower resistance
- Ensure excellent water evacuation, even pressure distribution and heat dissipation
- Provide outstanding resistance to abrasion.

TYRE SIZE	PLY RATING	LOAD INDEX	SPEED SYMBOL	M+S	RIM	OVERALL DIAMETER (mm)	SECTION WIDTH (mm)	TREAD DEPTH (mm)	TUBE	MAX PRESSURE (kPa) (single/dual)	MAX LOAD (kg) (single/dual)
11R22.5	16	146/141	L	M+S	8.25	1054	279	15	TL	810/830	3000/2725
11R24.5	16	146/143	M	-	8.25	1104	279	15	TL	720/720	3000/2725
11R24.5	16	148/146	L	-	8.25	1104	279	15	TL	720/720	3000/2725
285/75R24.5	14	144/141	M	-	8.25	1050	283	15.5	TL	760/760	2800/2575
285/75R24.5	16	147/144	L	-	8.25	1050	283	15.5	TL	810/830	3070/2800
295/75R22.5	14	144/141	M	-	9.00	1014	298	15.5	TL	760/760	2800/2575
295/75R22.5	16	146/143	L	-	9.00	1014	298	15.5	TL	810/830	3000/2725
215/75R17.5	16	135/133	J	M+S	6.00	767	212	12	TL	810/850	2180/2060
235/75R17.5	16	132/130	M	M+S	6.75	797	231	13	TL	870/875	2720/2575
225/70R19.5	14	128/126	L	-	6.75	811	226	13	TL	760/760	1800/1700
245/70R19.5	16	135/133	M	-	7.50	839	248	13	TL	810/830	2180/2060
255/70R22.5	16	140/137	L	-	7.50	839	255	13	TL	830/830	2500/2300



MG123

Features

- Four circumferential grooves Provide excellent anti-slip slipping
- Solid shoulder design Performance and ensure excellent water evacuation
- Specially designed compound Provide outstanding resistance to abrasion resistance

Suitable for:

- Steer and trailer position of truck, all wheel position of bus
- Highways, national roads and urban roads.

TYRE SIZE	PLY RATING	LOAD INDEX	SPEED SYMBOL	M+S	RIM	OVERALL DIAMETER (mm)	SECTION WIDTH (mm)	TREAD DEPTH (mm)	TUBE	MAX PRESSURE (kPa) (single/dual)	MAX LOAD (kg) (single/dual)
11.00R20	18	152/149	K	-	8.00	1085	291	16.5	TT	930/900	3550/3250



MG121

Features

- Steer position rib pattern provides directional control and low rolling resistance.
- Strong shoulder provides excellent handling.
- Small sipes on ribs and shoulders for better performance on wet surface, reduces heat buildup.
- Large contact area ensures long mileage.

Suitable for:

- Steer and trailer position of truck and all wheel position of bus.
- Highways and national roads.

TYRE SIZE	PLY RATING	LOAD INDEX	SPEED SYMBOL	M+S	RIM	OVERALL DIAMETER (mm)	SECTION WIDTH (mm)	TREAD DEPTH (mm)	TUBE	MAX PRESSURE (kPa) (single/dual)	MAX LOAD (kg) (single/dual)
8.25R16	16	128/124	M	-	6.50H	855	235	13.5	TT	770/770	1800/1600
8.5R17.5	16PR	140/141	J	-	6.75	842	173	13	TL	875/877	2725/2575
11.00R20	18	152/149	K	-	8.00	1085	291	15.5	TT	930/930	3550/3250
295/80R22.5	16	152/149	M	M+S	9.00	1044	298	16.5	TL	900/900	3550/3250
285/70R22.5	20	154/150/152/148	LIM	M+S	9.00	1014	312	15.5	TL	850/850	3550/3150
315/80R22.5	20	156/151/154/151	LIM	M+S	9.00	1076	312	14.5	TL	860/860	4000/3550



MG124

Features

- Solid rib design combined with multiple sipes Provide excellent heat dissipation and improved regular wear with lower resistance
- Four wide circumferential grooves Ensure excellent water evacuation, even pressure distribution and heat dissipation

Suitable for:

- Steer and trailer position of truck, all wheel position of bus.
- Highways, national roads and urban roads.

TYRE SIZE	PLY RATING	LOAD INDEX	SPEED SYMBOL	M+S	RIM	OVERALL DIAMETER (mm)	SECTION WIDTH (mm)	TREAD DEPTH (mm)	TUBE	MAX PRESSURE (kPa) (single/dual)	MAX LOAD (kg) (single/dual)
315/80R22.5	20	156/151/154/151	LIM	M+S	9.00	1076	312	14.5	TL	860/860	4000/3550

2016-2017 MIRAGE

5



MG330

Features

- New tread pattern and compound for lower rolling resistance and wear-rate, improving on fuel consumption and mileage.
- Special groove design to prevent stone trapping in grooves.
- Lateral sipes for more even wear and better wet grip.

Suitable for:

- Steer and trailer position of truck. All wheel position of bus.
- Highways, national roads and urban with good road surfaces.

TYRE SIZE	PLY RATING	LOAD INDEX	SPEED SYMBOL	M+S	RIM	OVERALL DIAMETER (mm)	SECTION WIDTH (mm)	TREAD DEPTH (mm)	TUBE	MAX PRESSURE (kPa) (single/dual)	MAX LOAD (kg) (single/dual)
11R22.5	16	146/145	M	M+S	8.25	1054	279	15	TL	810/830	3150/2900
12R22.5	18	152/149	M	M+S	9.00	1085	300	16.5	TL	930/930	3550/3250



MG607

Features

- Large footprint for better traction and stability.
- Abrasion-resistant tread compound for better mileage and reduced wear-rate.

Suitable for:

- Drive position of cargo truck traveling at mid to long distance.
- Highway and regional roads.

TYRE SIZE	PLY RATING	LOAD INDEX	SPEED SYMBOL	M+S	RIM	OVERALL DIAMETER (mm)	SECTION WIDTH (mm)	TREAD DEPTH (mm)	TUBE	MAX PRESSURE (kPa) (single/dual)	MAX LOAD (kg) (single/dual)
12.00R24	20	160/157	K	-	8.50	1225	315	20.0	TT	900/900	4500/4125



MG606/606+

Features

- Good directional handling with four longitudinal grooves.
- Rib design with zigzag sipes provides excellent lateral traction and wet grip.

Suitable for:

- Steer and trailer position of cargo truck and all wheel position of bus.
- Highway, regional roads and urban driving condition.

TYRE SIZE	PLY RATING	LOAD INDEX	SPEED SYMBOL	M+S	RIM	OVERALL DIAMETER (mm)	SECTION WIDTH (mm)	TREAD DEPTH (mm)	TUBE	MAX PRESSURE (kPa) (single/dual)	MAX LOAD (kg) (single/dual)
8.00R20	16	144/142	K	-	7.00	1019	258	15.0	TT	900/900	2800/2650
10.00R20	18	140/146	K	-	7.50	1055	278	15.0	TL	950/930	3200/3000
11.00R20	18	152/149	K	-	8.00	1085	293	17.0	TT	930/930	3550/3250
12.00R20	18	154/149	K	-	8.50	1125	315	17.5	TL	840/770	3790/3270
11R22.5	16	146/145	M	M+S	8.25	1094	279	15.0	TL	810/830	3150/2900
315/80R22.5	20	156/152	L	M+S	9.00	1076	312	14.5	TL	860/860	4000/3550



MG660

Features

- New tread pattern and compound for lower rolling resistance and wear-rate, reducing fuel consumption and improving usage mileage.
- Lateral sipes for more even wear and better wet grip.

Suitable for:

- Steer and trailer position of truck, all wheel position of bus.
- Highways, national roads and urban roads.

TYRE SIZE	PLY RATING	LOAD INDEX	SPEED SYMBOL	M+S	RIM	OVERALL DIAMETER (mm)	SECTION WIDTH (mm)	TREAD DEPTH (mm)	TUBE	MAX PRESSURE (kPa) (single/dual)	MAX LOAD (kg) (single/dual)
11R22.5	16	146/145	M	M+S	8.25	1054	279	15.0	TL	810/830	3150/2900
11R22.5	18	152/149	M	-	8.00	1085	300	16.5	TL	930/930	3550/3250
11R22.5	20	156/152/154/151	LIM	M+S	8.75	1124	320	17.0	TL	860/860	4000/3550
215/75R17.5	16	135/133	J	M+S	6.00	787	212	12.0	TL	850/850	2180/2060
295/70R22.5	24	140/137	L	-	7.80	900	275	14.0	TL	810/810	2500/2300
295/80R22.5	18	152/149	M	M+S	9.00	1044	298	15.0	TL	900/900	3550/3250
315/70R22.5	20	154/150/152/148	LIM	M+S	9.00	1044	312	15.0	TL	900/900	3750/3350
315/80R22.5	20	156/151/154/151	LIM	M+S	9.00	1076	312	14.5	TL	860/860	4000/3550

2016-2017 MIRAGE

7



MG688

Features

- ▶ Longitudinal rib pattern for directional control and low rolling resistance compound for reduced fuel consumption.
- ▶ Small sipes on ribs and shoulders for more even wear and reduce heat build-up.

Suitable for:

- ▶ Steer and trailer position of truck.
- ▶ Highways and national roads.

TYRE SIZE	PLY RATINGS	LOAD INDEX	SPEED SYMBOL	M+S	RIM	OVERALL DIAMETER (mm)	SECTION WIDTH (mm)	TREAD DEPTH (mm)	TUBE	MAX PRESSURE (kPa) (psi)	MAX LOAD (kg) (lb)
295/80R22.5	18	152/149	M	M+S	9.00	3044	208	15.0	TL	800/900	3550/3150



MG303

Features

- ▶ Unique inter-connected block design with longitudinal grooves provide drive stability, more even tread wear and better resistance to tearing.
- ▶ Beads are reinforced for heavier load.
- ▶ Large pattern blocks for better traction and braking.
- ▶ Self-cleaning grooves for mud and sand surfaces.

Suitable for:

- ▶ Drive and trailer position of dump truck, mining truck and concrete mixer.
- ▶ Off road or loose surface condition including construction and mining sites, with a maximum speed of 60km/h.

TYRE SIZE	PLY RATINGS	LOAD INDEX	SPEED SYMBOL	M+S	RIM	OVERALL DIAMETER (mm)	SECTION WIDTH (mm)	TREAD DEPTH (mm)	TUBE	MAX PRESSURE (kPa) (psi)	MAX LOAD (kg) (lb)
7.00R16L1	14	118/114	K	-	5.50F	275	206	14	TT	770/770	3320/3180
8.25R16L1	16	122/118	J	-	6.00G	305	215	15	TT	770/770	3800/3600
8.25R20	16	120/124	J	-	6.50H	355	235	16	TT	770/770	3800/3600
9.00R20	16	120/137	K	-	6.50	374	236	16	TT	930/930	2400/2300
9.00R20	18	144/142	J	-	7.00	3819	258	17	TT	790/790	2375/2430
10.00R20	18	149/146	K	-	7.50	3854	278	18	TT	930/930	3250/3000
11.00R20	18	152/149	J	-	8.00	3885	283	18	TT	930/930	3150/3250
12.00R20	18	154/149	K	-	8.50	3125	315	20	TT	840/770	3790/3270



FAR518

Features

- ▶ Special tread compound Provide outstanding resistance to abrasion
- ▶ Three zigzag grooves Provide good applicability for all position
- ▶ Special groove design Deliver stone-ejecting property

Suitable for:

- ▶ Steer and trailer position of truck, all wheel position of bus.
- ▶ Highways, national roads and urban roads.

TYRE SIZE	PLY RATINGS	LOAD INDEX	SPEED SYMBOL	M+S	RIM	OVERALL DIAMETER (mm)	SECTION WIDTH (mm)	TREAD DEPTH (mm)	TUBE	MAX PRESSURE (kPa) (psi)	MAX LOAD (kg) (lb)
225/70R17.5	14	129/127	M	M+S	6.75	781	226	13.0	TL	720/725	1850/1750
245/70R17.5	16	136/134	M	M+S	7.50	789	248	13.0	TL	850/850	2240/2120
245/70R19.5	16	136/134	M	M+S	7.50	839	248	14.0	TL	850/850	2240/2120
245/70R19.5	18	141/140	J	M+S	7.50	839	248	14.0	TL	850/850	2575/2500
245/70R19.5	16	140/138	M	M+S	7.50	867	262	14.0	TL	770/775	2300/2300
265/70R19.5	18	148/141	J	M+S	7.50	867	262	14.0	TL	850/850	2720/2575
285/70R19.5	18	146/144/141/142	LIM	M+S	8.25	895	283	14.0	TL	850/850	3000/2800
285/70R19.5	18	150/148	J	M+S	8.25	895	283	14.0	TL	900/900	3350/3150



MG312

Features

- ▶ Block pattern design
- ▶ Solid shoulder design
- ▶ Four wide circumferential grooves

Suitable for:

- ▶ Provide excellent driving and braking force
- ▶ Provide outstanding resistance to abrasion
- ▶ Ensure excellent water evacuation even pressure distribution and heat dissipation.

TYRE SIZE	PLY RATINGS	LOAD INDEX	SPEED SYMBOL	M+S	RIM	OVERALL DIAMETER (mm)	SECTION WIDTH (mm)	TREAD DEPTH (mm)	TUBE	MAX PRESSURE (kPa) (psi)	MAX LOAD (kg) (lb)
11R24.5	16	146/143	L	M+S	8.25	1094	279	21.5	TL	830/830	3000/2725
11R24.5	14	146/143	M	-	8.25	1104	279	21.5	TL	720/720	3000/2725
11R24.5	16	149/146	L	-	8.25	1104	279	21.5	TL	830/830	3050/3000
11R24.5	14	144/141	M	-	8.25	1056	283	22.0	TL	760/760	2800/2375
285/70R24.5	18	147/144	L	-	8.25	1056	283	22.0	TL	830/830	3075/2800
295/70R24.5	18	144/141	M	-	9.00	1020	298	22.0	TL	760/760	2800/2375
295/70R24.5	18	146/143	L	-	9.00	1054	298	22.0	TL	830/830	3000/2725

2016-2017 **MIRAGE**



MG313

Features

- ▶ Lug and block pattern design improves traction, driving and braking performance.
- ▶ Special groove design prevents stone picking.
- ▶ Special tread compound provides outstanding resistance to puncture and tearing.
- ▶ Open shoulder provides excellent heat dissipation.

Suitable for:

- ▶ Drive position of dump truck, mining truck and concrete mixer.
- ▶ Off road or loose surface condition including construction and mining sites.

TYRE SIZE	PLY RATINGS	LOAD INDEX	SPEED SYMBOL	M+S	RIM	OVERALL DIAMETER (mm)	SECTION WIDTH (mm)	TREAD DEPTH (mm)	TUBE	MAX PRESSURE (kPa) (psi)	MAX LOAD (kg) (lb)
7.00R16	14	122/118	M	-	6.00G	305	215	15	TT	770/770	3060/3120
8.25R16	16	120/124	M	-	6.50H	355	235	16	TT	740/740	3400/3400
8.25R20	16	139/137	K	-	6.50	374	236	16	TT	930/930	2430/2300
9.00R20	16	144/142	K	-	7.00	3819	259	17	TT	790/790	2375/2430
10.00R20	18	149/146	K	-	7.50	3854	279	18	TT	930/930	3250/3000
11.00R20	18	152/149	K	-	8.00	3885	283	19	TT	930/930	3150/3250
12.00R20	18	154/149	K	-	8.50	3125	315	20	TT	840/770	3790/3270



MG505

Features

- ▶ Block pattern design Provide excellent driving and braking force
- ▶ Extra wide footprint Enhanced stability and resistance to abrasion
- ▶ Deeper tread depth design Improved mileage performance

Suitable for:

- ▶ Drive position of truck.
- ▶ Highways and national roads.

TYRE SIZE	PLY RATINGS	LOAD INDEX	SPEED SYMBOL	M+S	RIM	OVERALL DIAMETER (mm)	SECTION WIDTH (mm)	TREAD DEPTH (mm)	TUBE	MAX PRESSURE (kPa) (psi)	MAX LOAD (kg) (lb)
11.00R20	18	149/146	K	-	7.50	3854	278	20.5	TT	930/930	3250/3000



MG322

Features

- ▶ Special tread compound. Provide outstanding resistance to puncture and tearing
- ▶ Lug and special block pattern design Improved traction, driving and braking performance

Suitable for:

- ▶ Drive and trailer position of dump truck, mining truck and concrete mixer.
- ▶ Off road condition including construction and mining sites.

TYRE SIZE	PLY RATINGS	LOAD INDEX	SPEED SYMBOL	M+S	RIM	OVERALL DIAMETER (mm)	SECTION WIDTH (mm)	TREAD DEPTH (mm)	TUBE	MAX PRESSURE (kPa) (psi)	MAX LOAD (kg) (lb)
12.00R24	20	160/157	K	-	8.50	3226	315	18.0	TT	900/900	4300/4125
315/80R22.5	20	156/152	L	M+S	9.00	1076	312	20.5	TL	860/860	4000/3550



MG628

Features

- ▶ A drive position pattern with block design that provides grip, traction and stability.
- ▶ Wider tread width and larger contact area especially at shoulder area for longer mileage and even-wear.

Suitable for:

- ▶ Drive position of truck.
- ▶ Highways and national roads.

TYRE SIZE	PLY RATINGS	LOAD INDEX	SPEED SYMBOL	M+S	RIM	OVERALL DIAMETER (mm)	SECTION WIDTH (mm)	TREAD DEPTH (mm)	TUBE	MAX PRESSURE (kPa) (psi)	MAX LOAD (kg) (lb)
11R22.5	16	148/145/146/143	K	M+S	8.25	1054	279	16.5	TL	830/780	3000/2750
12R22.5	18	152/149	L	-	9.00	1085	300	17.5	TL	930/930	3550/3150
13R22.5	20	156/152/151/151	LIM	M+S	9.75	1124	320	18.0	TL	860/860	4000/3550
215/70R17.5	16	135/131	J	M+S	6.00	787	212	14.0	TL	810/810	2180/2060
235/70R17.5	16	143/141	J	M+S	6.75	797	233	15.0	TL	875/875	2725/2575
270/80R21.5	18	152/148	M	M+S	8.00	1044	298	16.0	TL	860/860	3150/3150
315/70R22.5	20	154/150/152/146	LIM	M+S	9.00	1014	312	22.0	TL	900/900	3750/3150
315/80R21.5	20	156/151/151/151	LIM	M+S	9.00	1076	312	20.0	TL	860/860	4000/3550

2016-2017 **MIRAGE**



Features

- Block pattern designed for drive position providing first-class performance on grip, traction and stability.
- Wider tread width for longer mileage and even-wear.

Suitable for:

- Drive position of truck.
- Highways and national roads.
- *638+ is designed with deeper tread depth.

MG638/MG638+

TYRE SIZE	PLY RATING	LOAD INDEX	SPEED SYMBOL	M+S	RIM	OVERALL DIAMETER (mm)	SECTION WIDTH (mm)	TREAD DEPTH (mm)	TUBE	MAX PRESSURE (kPa) (single/dual)	MAX LOAD (kg) (single/dual)
350R20	18	149/146	K	-	7.50	1054	278	23	TT	930/930	3250/3000
11R22.5	16	148/146	M	M+S	8.25	1054	278	20	TL	850/850	3150/2900
12R22.5	18	152/149	M	M+S	9.00	1085	300	16	TL	930/930	3550/3250
12R22.5	18	152/149	M	M+S	9.00	1085	300	20	TL	930/930	3550/3250
15.5R20	20	156/153/151/150	LIM	M+S	9.00	1014	312	20	TL	900/900	3750/3550
15.5R22.5	20	156/153/151/148	LIM	M+S	9.00	1076	321	23	TL	860/860	4000/3550



Features

- A mixed rig and lug pattern with large center elements for enhanced directional stability.
- Lateral grooves maximize traction on different road surfaces.

Suitable for:

- Drive position of truck, drive and trailer position of concrete mixer and dump truck.
- National highway and regional roads as well as on/off road condition.

MG701

TYRE SIZE	PLY RATING	LOAD INDEX	SPEED SYMBOL	M+S	RIM	OVERALL DIAMETER (mm)	SECTION WIDTH (mm)	TREAD DEPTH (mm)	TUBE	MAX PRESSURE (kPa) (single/dual)	MAX LOAD (kg) (single/dual)
9.0R20	16	144/142	J	-	7.00	1019	259	16.5	TT	900/900	2900/2650
10.0R20	18	149/146	K	-	7.50	1054	278	17	TT	930/930	3250/3000
11.0R20	18	152/149	K	-	8.00	1085	293	18	TT	930/930	3550/3250
12.0R20	18	154/149	K	-	8.50	1125	315	18	TT	840/770	3790/3270
12R22.5	18	152/149	M	M+S	9.00	1085	300	18.5	TL	930/930	3550/3250



Features

- Block pattern designed for drive position providing first-class performance on grip, traction and stability.
- Wider tread width with inter-linked blocks for longer mileage and even wear.

Suitable for:

- Drive position of truck.
- Highways and national roads.

MG900/MG668

TYRE SIZE	PLY RATING	LOAD INDEX	SPEED SYMBOL	M+S	RIM	OVERALL DIAMETER (mm)	SECTION WIDTH (mm)	TREAD DEPTH (mm)	TUBE	MAX PRESSURE (kPa) (single/dual)	MAX LOAD (kg) (single/dual)
10.0R20	18	149/146	K	-	7.50	1055	278	21.0	TT	930/930	3250/3000
295/80R22.5	18	152/149	M	M+S	9.00	1044	298	18.0	TL	860/860	3550/3150



Features

- Large lateral block pattern maximizes traction in muddy road condition.
- Special tread compound for better resistance to shipping and cutting.

Suitable for:

- Drive position of cargo truck for medium and short distance.
- Drive and trailer position of dump truck and concrete mixer.
- Regional roads, unpaved roads as well as construction and mining sites.

MG706

TYRE SIZE	PLY RATING	LOAD INDEX	SPEED SYMBOL	M+S	RIM	OVERALL DIAMETER (mm)	SECTION WIDTH (mm)	TREAD DEPTH (mm)	TUBE	MAX PRESSURE (kPa) (single/dual)	MAX LOAD (kg) (single/dual)
7.0R16	14	118/114	M	-	5.50F	775	209	12.0	TT	770/770	1320/1180
7.50R16	14	122/118	M	-	6.00F	805	215	14.0	TT	740/740	1490/1310
8.25R16	16	128/124	M	-	6.50H	855	235	15.0	TT	740/740	1800/1600
8.25R20	16	139/137	K	-	6.50	974	236	18.0	TT	930/930	2430/2000
9.0R20	16	144/142	K	-	7.00	1019	259	16.0	TT	900/900	2900/2600
10.0R20	18	149/146	K	-	7.50	1055	278	16.5	TT	930/930	3250/3000
11.0R20	18	152/149	K	-	8.00	1085	293	17.5	TT	930/930	3550/3250
12.0R20	18	154/149	K	-	8.50	1125	315	18.5	TT	840/770	3790/3270

2016-2017 **MIRAGE**

15
14

TRAILER



Features

- Unique inter-connected block design with longitudinal grooves provide drive stability, more even tread wear and better resistance to tearing.
- Beads are reinforced for heavier load.
- Large pattern blocks for better traction and braking.
- Self-cleaning grooves for mud and sand surfaces.

Suitable for:

- Drive and trailer position of dump truck, mining truck and concrete mixer.
- Off road or loose surface condition including construction and mining sites, with a maximum speed of 60km/h.

MG729

TYRE SIZE	PLY RATING	LOAD INDEX	SPEED SYMBOL	M+S	RIM	OVERALL DIAMETER (mm)	SECTION WIDTH (mm)	TREAD DEPTH (mm)	TUBE	MAX PRESSURE (kPa) (single/dual)	MAX LOAD (kg) (single/dual)
10.0R20	18	149/146	K	-	7.50	1055	278	21.0	TT	930/930	3250/3000
11.0R20	18	152/149	K	-	8.00	1085	293	18.0	TT	930/930	3550/3250
12.0R20	18	154/149	K	-	8.50	1125	315	18.5	TT	840/770	3790/3270
12.0R24	20	160/157	K	-	8.50	1225	315	19.0	TT	930/930	4900/4125



Features

- Optimized pattern design Provide outstanding resistance to irregular
- Special groove design Deliver stone-ejecting property
- Specially designed compound Deliver lower rolling resistance

Suitable for:

- Trailer position of truck, all wheel position of bus.
- Highways, national roads and urban roads.

FTL311

TYRE SIZE	PLY RATING	LOAD INDEX	SPEED SYMBOL	M+S	RIM	OVERALL DIAMETER (mm)	SECTION WIDTH (mm)	TREAD DEPTH (mm)	TUBE	MAX PRESSURE (kPa) (single/dual)	MAX LOAD (kg) (single/dual)
800R22.5	20	160/158	KL1	M+S	12.25	998	268	15.5	TL	900	4500
40xR22.5	20	160/158	KL1	M+S	11.75	1072	309	16	TL	900	4500
40xR22.5	20	165	K	M+S	13	1124	449	16	TL	825	5130
46xR22.5	20	189	K	M+S	13	1130	444	16	TL	900	5800



Features

- Innovative tread design and compounds promote excellent traction and resist uneven wear.
- Durable casing construction perfect for tough regional and urban use.
- Deep tread depth provides maximum tread life.

Suitable for:

- Drive and trailer position of dump truck, mining truck and concrete mixer.
- Off road condition including construction and mining sites.

MG768

TYRE SIZE	PLY RATING	LOAD INDEX	SPEED SYMBOL	M+S	RIM	OVERALL DIAMETER (mm)	SECTION WIDTH (mm)	TREAD DEPTH (mm)	TUBE	MAX PRESSURE (kPa) (single/dual)	MAX LOAD (kg) (single/dual)
10.0R20	18	149/146	K	-	7.50	1054	278	18	TT	930/930	3250/3000
11.0R20	18	152/149	J	-	8.00	1085	293	18	TT	930/930	3550/3250
12.0R20	18	154/149	K	-	8.50	1125	315	20	TT	840/770	3790/3270
12R22.5	18	152/149	M	-	9.00	1085	300	20	TL	930/930	3550/3250
13R22.5	20	156/153/151/150	LIM	M+S	9.75	1124	320	20	TL	870/870	4000/3550
15.5R22.5	20	156/153/151/150	LIM	M+S	9.00	1076	312	20	TL	860/860	4000/3550



Features

- Special tread compound Provide outstanding resistance to puncture and tearing
- Lug and block pattern design Improved traction, driving and braking performance
- Special groove design Improve stone-ejecting property

Suitable for:

- Drive position of truck.
- Highways and national roads.

FTM313

TYRE SIZE	PLY RATING	LOAD INDEX	SPEED SYMBOL	M+S	RIM	OVERALL DIAMETER (mm)	SECTION WIDTH (mm)	TREAD DEPTH (mm)	TUBE	MAX PRESSURE (kPa) (single/dual)	MAX LOAD (kg) (single/dual)
385/65R22.5	20	160/158	KL1	M+S	11.75	1072	309	18.5	TL	900	4500

2016-2017 **MIRAGE**

16
16



MG618

- Features**
- Low rolling resistance for reduced fuel consumption.
 - Lateral grooves on ribs for better traction.
 - Longitudinal grooves on shoulder for even wear.

- Suitable for:**
- Trailer position of truck.
 - Highways, national roads, harbors and ports.

TYRE SIZE	PLY RATING	LOAD INDEX	SPEED SYMBOL	M+S	RIM	OVERALL DIAMETER (mm)	SECTION WIDTH (mm)	TREAD DEPTH (mm)	TUBE	MAX PRESSURE (kPa) (psi)	MAX LOAD (kg) (lb)
18X22.5	16	146/142	M	M+S	8.25	3054	279	11.5	TL	806/930	3150/2900
12K22.5	18	152/149	M	-	9.00	1085	300	12.5	TL	930/930	3550/3250
295/70R22.5	14	146/143	M	M+S	9.00	1014	298	11.0	TL	780/750	2800/2575
295/70R22.5	16	146/143	L	M+S	9.00	1014	298	11.0	TL	838/830	3000/2725



MG168

- Features**
- Special tread compound
 - Provide outstanding resistance to puncture and tearing
 - Lug and block pattern design
 - Improved traction, driving and braking performance

- Suitable for:**
- Drive and trailer position of dump truck, mining truck and concrete mixer.
 - Off road or loose surface condition including construction and mining sites with vehicle traveling at less than 60 km per hour.

TYRE SIZE	PLY RATING	LOAD INDEX	SPEED SYMBOL	M+S	RIM	OVERALL DIAMETER (mm)	SECTION WIDTH (mm)	TREAD DEPTH (mm)	TUBE	MAX PRESSURE (kPa) (psi)	MAX LOAD (kg) (lb)
700K6	14	118/114	K	-	5.50	775	200	17.5	TT	770/770	3120/1380
700K8	14	122/118	K	-	6.00	805	215	18	TT	770/770	3100/1320
820K6	16	128/124	J	-	6.50	855	235	18	TT	770/770	3000/1480
820K8	16	130/137	C	-	6.50	874	236	21	TT	930/930	2450/1300
900K0	18	144/142	C	-	7.00	1019	258	21.5	TT	780/750	2375/2430
100K00	18	149/146	C	-	7.50	1019	278	22	TT	930/930	3120/1000



ST022

- Features**
- Tread compound for better mileage.
 - Tread designed for even wear.

- Suitable for:**
- Trailer position of truck traveling mid to long distance.
 - National highways and regional roads.

TYRE SIZE	PLY RATING	LOAD INDEX	SPEED SYMBOL	M+S	RIM	OVERALL DIAMETER (mm)	SECTION WIDTH (mm)	TREAD DEPTH (mm)	TUBE	MAX PRESSURE (kPa) (psi)	MAX LOAD (kg) (lb)
295/70R22.5	16	146/141	J	M+S	6.75	797	233	13	TL	875/875	2725/2575
885/65R22.5	20	380	K	M+S	11.75	1072	389	17	TL	900/-	4500/-



MG318

- Features**
- Large lateral blocks provides excellent traction and grip.
 - Special tread compound for improved resistance to tearing and chipping.
 - Reinforced bead area for better load capacity.

- Suitable for:**
- Drive and trailer position of dump truck, mining truck and concrete mixer.
 - Off road or loose surface condition including construction and mining sites with vehicle traveling at less than 60 km per hour.

TYRE SIZE	PLY RATING	LOAD INDEX	SPEED SYMBOL	M+S	RIM	OVERALL DIAMETER (mm)	SECTION WIDTH (mm)	TREAD DEPTH (mm)	TUBE	MAX PRESSURE (kPa) (psi)	MAX LOAD (kg) (lb)
820K0	16	130/137	C	-	6.50	974	234	16	TT	930/930	2450/2300
900R20	18	144/142	C	-	7.00	1019	259	17	TT	780/750	2375/2430
1000R20	18	149/146	C	-	7.50	1054	278	18	TT	930/930	3120/3000
1100R20	18	152/149	C	-	7.50	1096	293	24	TT	930/930	3150/3150
1200R20	18	154/149	C	-	8.00	1125	315	25	TT	840/770	3790/3270
1200R24	20	160/157	K	-	8.50	1225	315	21.5	TT	930/930	4000/4125
295/60R22.5	18	152/149	C	M+S	9.00	1044	298	21.5	TL	900/900	3150/3250

2016-2017 **MIRAGE**



MG320

- Features**
- Special tread compound Lug and block pattern design
 - Provide outstanding resistance to puncture and tearing
 - Reinforced carcass and bead design
 - Improved traction, driving and braking performance.

- Suitable for:**
- Drive and trailer position of dump truck, mining truck and concrete mixer.
 - Off road or loose surface condition including construction and mining sites with vehicle traveling at less than 60 km per hour.

TYRE SIZE	PLY RATING	LOAD INDEX	SPEED SYMBOL	M+S	RIM	OVERALL DIAMETER (mm)	SECTION WIDTH (mm)	TREAD DEPTH (mm)	TUBE	MAX PRESSURE (kPa) (psi)	MAX LOAD (kg) (lb)
295/60R22.5	18	152/149	C	M+S	9.00	1044	298	21.5	TL	900/900	3550/3250



MG707

- Features**
- Special tread compound for better resistance to chipping and cutting.
 - Large block pattern maximizes traction in uneven and muddy terrain.
 - Reinforced bead and casing for better load capacity and multiple retreat.

- Suitable for:**
- Drive and trailer position of dump truck and concrete mixer.
 - Regional roads, unpaved roads as well as construction and mining sites.

TYRE SIZE	PLY RATING	LOAD INDEX	SPEED SYMBOL	M+S	RIM	OVERALL DIAMETER (mm)	SECTION WIDTH (mm)	TREAD DEPTH (mm)	TUBE	MAX PRESSURE (kPa) (psi)	MAX LOAD (kg) (lb)
1800R20	18	149/146	K	-	7.50	1054	278	18.5	TT	830/830	3100/3125
1100R20	18	152/149	K	-	8.00	1095	293	21.0	TT	830/830	3350/3075
1200R20	18	154/149	K	-	8.50	1135	315	21.5	TT	840/770	3790/3270



MG321

- Features**
- Lug and block pattern design
 - Improved traction, driving and braking performance
 - Special tread compound reinforced carcass and bead design.
 - Provide outstanding resistance to puncture and tearing.

- Suitable for:**
- Drive and trailer position of dump truck, mining truck and concrete mixer.
 - Off road or loose surface condition including construction and mining sites with vehicle traveling at less than 60 km per hour.

TYRE SIZE	PLY RATING	LOAD INDEX	SPEED SYMBOL	M+S	RIM	OVERALL DIAMETER (mm)	SECTION WIDTH (mm)	TREAD DEPTH (mm)	TUBE	MAX PRESSURE (kPa) (psi)	MAX LOAD (kg) (lb)
1100R20	18	150/149	C	-	8.00	1096	293	25	TT	930/930	3550/3250
1200R20	18	154/149	K	-	8.50	1136	315	25	TT	840/770	3790/3270

2016-2017 **MIRAGE**

Technical File

SIZE	PLY RATING	LOAD INDEX	SPEED RATING	PATTERN	M-S	TUBE	STANDARD RIB	MAX LOAD (KG) SINGLE	MAX LOAD (KG) DUAL	MAX PRESSURE (KPa) SINGLE	MAX PRESSURE (KPa) DUAL	TREAD DEPTH (mm)	SECTION WIDTH (mm)	OUTER DIAMETER (mm)
6.5R16	12	113/110	K	HF702	-	TT	5.50F	1150	1030	770	770	11.0	166	750
7.0R16	14	118/114	K	HF168	-	TT	5.50F	1320	1180	770	770	17.5	200	775
7.0R16	14	118/114	M	HF702	-	TT	5.50F	1320	1180	770	770	14.0	200	775
7.0R16	14	118/114	K	HF303	-	TT	5.50F	1320	1180	770	770	14.0	200	775
7.0R16	14	118/114	M	HF706	-	TT	5.50F	1320	1180	770	770	12.0	200	775
7.5R16	14	122/118	K	HF168	-	TT	6.00G	1500	1320	770	770	18	215	805
7.5R16	14	122/118	M	HF702	-	TT	6.00G	1500	1320	770	770	13.0	215	805
7.5R16	14	122/118	J	HF303	-	TT	6.00G	1500	1320	770	770	15.0	215	805
7.5R16	14	122/118	M	HF706	-	TT	6.00G	1500	1320	770	770	14.0	215	805
7.5R16	14	122/118	M	HF313	-	TT	6.00G	1500	1320	770	770	15.0	215	805
8.25R16	16	128/124	M	HF121	-	TT	6.50H	1800	1600	770	770	13.5	235	855
8.25R16	16	128/124	J	HF168	-	TT	6.50H	1800	1600	770	770	18.0	235	855
8.25R16	16	128/124	M	HF702	-	TT	6.50H	1800	1600	770	770	15.0	235	855
8.25R16	16	128/124	J	HF303	-	TT	6.50H	1800	1600	770	770	16.0	235	855
8.25R16	16	128/124	L	HF706	-	TT	6.50H	1800	1600	740	740	15.0	235	855
8.25R16	16	128/124	M	HF313	-	TT	6.50H	1800	1600	740	740	16.0	235	855
8.25R20	16	139/137	C	HF168	-	TT	6.5	2430	2300	930	930	21.0	236	974
8.25R20	16	139/137	L	HF702	-	TT	6.5	2430	2300	930	930	13.5	236	974
8.25R20	16	139/137	K	HF303	-	TT	6.5	2430	2300	930	930	16.0	236	974
8.25R20	16	139/137	L	HF706	-	TT	6.5	2430	2300	930	930	14.5	236	974
8.25R20	16	139/137	C	HF318	-	TT	6.5	2430	2300	930	930	16.0	236	974
9.0R20	16	144/142	K	HF606	-	TT	7.00	2800	2650	900	900	15.0	259	1019
9.0R20	16	144/142	K	HF706	-	TT	7.00	2800	2650	900	900	15.0	259	1019
9.0R20	16	144/142	C	HF168	-	TT	7.00	2800	2650	900	900	21.5	259	1019
9.0R20	16	144/142	K	HF702	-	TT	7.00	2800	2650	900	900	15.5	259	1019
9.0R20	16	144/142	J	HF303	-	TT	7.00	2800	2650	900	900	17.0	259	1019
9.0R20	16	144/142	K	HF706	-	TT	7.00	2800	2650	900	900	16.0	259	1019
9.0R20	16	144/142	J	HF701	-	TT	7.00	2800	2650	900	900	16.5	259	1019
9.0R20	16	144/142	K	HF313	-	TT	7.00	2800	2650	900	900	17.0	259	1019
10.0R20	18	149/146	K	HF606	-	TT	7.5	3250	3000	930	930	15.0	278	1054
10.0R20	18	149/146	K	HF706	-	TT	7.5	3250	3000	930	930	16.0	278	1054
10.0R20	18	149/146	C	HF168	-	TT	7.5	3250	3000	930	930	22.0	278	1054
10.0R20	18	149/146	K	HF702	-	TT	7.5	3250	3000	930	930	16.5	278	1054
10.0R20	18	149/146	K	HF706	-	TT	7.5	3250	3000	930	930	18.0	278	1054
10.0R20	18	149/146	K	HF303	-	TT	7.5	3250	3000	930	930	18.0	278	1054
10.0R20	18	149/146	K	HF706	-	TT	7.5	3250	3000	930	930	16.5	278	1054
10.0R20	18	149/146	K	HF307	-	TT	7.5	3250	3000	930	930	17.0	278	1054
10.0R20	18	149/146	K	HF638	-	TT	7.5	3250	3000	930	930	23.0	278	1054
10.0R20	18	149/146	K	HF701	-	TT	7.5	3250	3000	930	930	17.0	278	1054
10.0R20	18	149/146	K	HF313	-	TT	7.5	3250	3000	930	930	18.0	278	1054
10.0R20	18	149/146	K	HF707	-	TT	7.5	3250	3000	930	930	20.0	278	1054
10.0R20	18	149/146	K	HF318	-	TT	7.5	3250	3000	930	930	18.0	278	1054
10.0R20	18	149/146	K	HF729	-	TT	7.5	3250	3000	930	930	21.0	278	1054
10.0R20	18	149/146	K	HF668	-	TT	7.5	3250	3000	930	930	21.0	278	1054
10.0R20	18	149/146	K	HF505	-	TT	7.5	3250	3000	930	930	20.0	278	1054

2016-2017 MIRAGE

Technical File

SIZE	PLY RATING	LOAD INDEX	SPEED RATING	PATTERN	M-S	TUBE	STANDARD RIB	MAX LOAD (KG) SINGLE	MAX LOAD (KG) DUAL	MAX PRESSURE (KPa) SINGLE	MAX PRESSURE (KPa) DUAL	TREAD DEPTH (mm)	SECTION WIDTH (mm)	OUTER DIAMETER (mm)
11.0R20	18	152/149	K	HF606	-	TT	8.00	3550	3250	930	930	17.0	293	1085
11.0R20	18	152/149	K	HF706	-	TT	8.00	3550	3250	930	930	17.0	293	1085
11.0R20	18	152/149	K	HF121	-	TT	8.00	3550	3250	930	930	15.5	293	1085
11.0R20	18	152/149	K	HF123	-	TT	8.00	3550	3250	930	930	16.5	293	1085
11.0R20	18	152/149	K	HF702	-	TT	8.00	3550	3250	930	930	17.0	293	1085
11.0R20	18	152/149	J	HF706	-	TT	8.00	3550	3250	930	930	18.0	293	1085
11.0R20	18	152/149	J	HF303	-	TT	8.00	3550	3250	930	930	17.0	293	1085
11.0R20	18	152/149	K	HF706	-	TT	8.00	3550	3250	930	930	17.5	293	1085
11.0R20	18	152/149	K	HF307	-	TT	8.00	3550	3250	930	930	17.5	293	1085
11.0R20	18	152/149	K	HF701	-	TT	8.00	3550	3250	930	930	17.0	293	1085
11.0R20	18	152/149	K	HF313	-	TT	8.00	3550	3250	930	930	19.0	293	1085
11.0R20	18	152/149	K	HF707	-	TT	8.00	3550	3250	930	930	21.0	293	1085
11.0R20	18	152/149	C	HF318	-	TT	8.00	3550	3250	930	930	24.0	293	1085
11.0R20	18	152/149	C	HF321	-	TT	8.00	3550	3250	930	930	24.0	293	1085
11.0R20	18	152/149	K	HF729	-	TT	8.00	3550	3250	930	930	18.0	293	1085
11.0R20	18	152/149	J	HF899	-	TT	8.00	3550	3250	930	930	17.5	293	1085
11.0R20	18	152/149	J	HF929	-	TT	8.00	3550	3250	930	930	27.0	293	1085
12.0R20	18	154/149	K	HF606	-	TT	8.5	3790	3270	840	770	17.5	315	1125
12.0R20	18	154/149	K	HF706	-	TT	8.5	3790	3270	840	770	17.5	315	1125
12.0R20	18	154/149	K	HF702	-	TT	8.5	3790	3270	840	770	17.5	315	1125
12.0R20	18	154/149	K	HF706	-	TT	8.5	3790	3270	840	770	20.0	315	1125
12.0R20	18	154/149	K	HF303	-	TT	8.5	3790	3270	840	770	20.0	315	1125
12.0R20	18	154/149	K	HF706	-	TT	8.5	3790	3270	840	770	18.5	315	1125
12.0R20	18	154/149	K	HF307	-	TT	8.5	3790	3270	840	770	19.0	315	1125
12.0R20	18	154/149	K	HF701	-	TT	8.5	3790	3270	840	770	19.0	315	1125
12.0R20	18	154/149	K	HF313	-	TT	8.5	3790	3270	840	770	21.5	315	1125
12.0R20	18	154/149	K	HF318	-	TT	8.5	3790	3270	840	770	25.5	315	1125
12.0R20	18	154/149	K	HF321	-	TT	8.5	3790	3270	840	770	25.5	315	1125
12.0R20	18	154/149	K	HF729	-	TT	8.5	3790	3270	840	770	18.5	315	1125
12.0R24	20	160/157	K	HF122	-	TT	8.5	4500	4125	900	900	15.5	315	1125
12.0R24	20	160/157	K	HF702	-	TT	8.5	4500	4125	900	900	16.0	315	1125
12.0R24	20	160/157	K	HF607	-	TT	8.5	4500	4125	900	900	20.0	315	1125
12.0R24	20	160/157	K	HF322	-	TT	8.5	4500	4125	900	900	16.0	315	1125
12.0R24	20	160/157	K	HF729	-	TT	8.5	4500	4125	900	900	19.0	315	1125
12.0R24	20	160/157	K	SAM517	M-S	TT	8.5	4500	4125	900	900	17.0	315	1125
11R22.5	16	148/146	M	HF203	M-S	TL	8.25	3150	2900	850	850	15.0	279	1054
11R22.5	16	148/146	M	HF600	M-S	TL	8.25	3150	2900	850	850	15.0	279	1054
11R22.5	16	148/146	M	HF506	M-S	TL	8.25	3150	2900	850	850	15.0	279	1054
11R22.5	16	148/143	L	HF111	M-S	TL	8.25	3000	2725	830	830	15.0	279	1054
11R22.5	16	148/143	L	HF618	M-S	TL	8.25	3150	2900	850	850	15.0	279	1054
11R22.5	16	148/143	K	HF702	M-S	TL	8.25	3150	2900	850	850	15.0	279	1054
11R22.5	16	148/143	K	HF628	M-S	TL	8.25	3150	2900	850	850	16.5	279	1054
11R22.5	16	148/143	L	HF312	M-S	TL	8.25	3000	2725	830	830	15.0	279	1054
11R22.5	16	148/145	L	SARS15	M-S	TL	8.25	3150	2900	850	850	15.5	279	1054
11R22.5	16	148/143	K	SAM517	M-S	TL	8.25	3150	2900	850	850	15.5	279	1054
11R22.5	14	144/142	M	SARS15	M-S	TL	8.25	2800	2650	720	720	15.5	279	1054

Technical File